

Hamilton Bluff Community Development District
219 East Livingston Street– Orlando – Florida – 32801

January 27, 2026

Town of Lake Hamilton- Mayors Office
PO Box 126
100 Smith Avenue
Lake Hamilton, Florida 33851
Attn: Phillis Hall- Mayor

Re: Hamilton Bluff Community Development District Initial Public Facilities Report

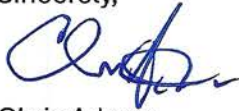
Dear Ms. Hall;

Pursuant to Section 189.008, Florida Statutes (the "Statute"), each independent special District in Florida is required to submit an initial public facilities report (the "Report") to each local general-purpose government in which it is located within the first year of establishment. Enclosed to comply with the requirements of the Statute is the Report for the Hamilton Bluff Community Development District (the "District"), dated January 26, 2026.

It is my understanding that the next "Special District's due date for filing the Report with the Local General-Purpose Government" for Lake Hamilton, Florida is May 1, 2030 (the "Submittal Date"). The District will send annual update letter identifying any changes to the Report prior to the next Submittal Date when a fully updated Report will be submitted.

Should you have any questions or comments, please feel free to contact me at cadams@gmstnn.com or phone (865) 250-1617.

Sincerely,



Chris Adams
Compliance Administrator

cc: District Manager
District Counsel
District Engineer

Exhibit A
Public Facilities Report

**HAMILTON BLUFF COMMUNITY DEVELOPMENT DISTRICT
INITIAL PUBLIC FACILITIES REPORT – DATED JANUARY 26, 2026**

I. PURPOSE AND SCOPE

This Initial Public Facilities Report attached as **Exhibit A**, is provided for the Hamilton Bluff Community Development District (the “**District**”) to comply with the requirement of Section 189.08, *Florida Statutes*, regarding the preparation and filing of a Special District Public Facilities Report.

II. PUBLIC FACILITIES

The District may currently own, operate or maintain certain of the public improvements comprising a portion of the District’s “**Capital Improvement Plan**,” as described in the District’s *Engineer’s Report for the Hamilton Bluff Community Development District* dated March 8, 2022, (the “**Engineer’s Report**”), a copy of which is attached hereto as **Exhibit B**. The public improvements are located within the District (or adjacent thereto) and are intended to have the capacity necessary to provide services to the planned units listed in the Engineer’s Report.

III. PROPOSED EXPANSIONS (7 YEAR HORIZON)

The District does not have plans to build, improve, or expand public improvements or community facilities within the District over the next seven years. Provided however, the district may construct or acquire components of the Capital Improvement Plan within the District’s boundaries.

IV. REPLACEMENT OF FACILITIES (10 YEAR HORIZON)

The District does not propose to replace any public facilities within the next 10 years.

V. CHAPTER 189, FLORIDA STATUTES

Attached as Exhibit C is a copy of Section 189.08, Florida Statutes for reference purposes only.

Exhibit B
Engineer's Report

Hamilton Bluff Community Development District

Engineer's Report

MARCH 8, 2022



SUBMITTED BY
Dewberry Engineers Inc.
800 North Magnolia Avenue
Suite 1000
Orlando, Florida 32803
407-843-5120

Project No:50143811

Table of Contents

INTRODUCTION	2
PURPOSE AND SCOPE	3
THE DEVELOPMENT	3
CAPITAL IMPROVEMENTS	3
CAPITAL IMPROVEMENT PLAN COMPONENTS	3
Stormwater Management Facilities	3
Public Roadways	4
Water and Wastewater Facilities	4
Off-Site Improvements	4
Amenities and Parks	5
Electric Utilities and Lighting	5
Entry Feature	5
Miscellaneous	5
Permitting	5
RECOMMENDATION	5
REPORT MODIFICATION	6
SUMMARY AND CONCLUSION	6
ENGINEER'S CERTIFICATION	6

List of Exhibits

Aerial Location Map.....	Exhibit 1
Legal Description.....	Exhibit 2
District Boundary Map.....	Exhibit 3
Land Use Map.....	Exhibit 4
Future Land Use Map.....	Exhibit 5
Drainage Floodplain and Utilities Map.....	Exhibit 6
Summary Opinion of District Facilities and Probable Cost.....	Exhibit 7
Overall Site Plan.....	Exhibit 8

INTRODUCTION

Hamilton Bluff Community Development District (the "District" or "CDD") is located entirely within the Town of Lake Hamilton, Florida (the "Town"), Polk County, Florida. It is located east of SR 17 at the crossroads of Water Tank Road and Detour Road. The District's northern border is along Kokoma Road (County Road 546 East) and the southern border is along Hatchineha Road (County Road 542). The District includes property both east and west of Detour Road. The District currently contains approximately 259.72 acres and is expected to consist of 1245 residential lots of various sizes of single-family6 units with recreation/amenity areas, parks, and associated infrastructure for the development.

The CDD was established under the Town Ordinance O-22-06 which was approved by the Town Commission on March 1, 2022. The District will own and operate the public roadways, utility systems, and stormwater management facilities, as well as the landscape, irrigation, signage, and recreational facilities within the development.

The Master Developer ("Developer") is GLK Real Estate, LLC, is based in Winter Haven, Florida. The development is approved land use as Residential Medium Density to be constructed in a single phase. A land use summary is presented in Table 1.

Public improvements and facilities financed, acquired, and/or constructed by the District will be designed and constructed to conform to regulatory criteria from the Town, county, Southwest Florida Water Management District (SWFWMD), and other applicable agencies with regulatory jurisdiction over the development, an overall estimate of the probable cost of the public improvements are provided in Exhibit 7 of this report.

The Capital Improvement Plan (CIP) or this Engineer's Report reflects the present intentions of the District and the landowners. It should be noted that the location of the proposed facilities and improvements may be adjusted during the final design, permitting, and implementation phases. It should also be noted that these modifications are not expected to diminish the benefits to the property within the District. The District reserves the right to make reasonable adjustments to the development plan to meet applicable regulatory requirements of agencies with jurisdiction over the development while maintaining a comparable level of benefits to the lands served by the improvements. Changes and modifications are expected as changes in regulatory criteria are implemented.

Table 1 Land Use

LAND USE	AREA (acres)
Master Stormwater System	24.6
Residential Land (Single-Family Lots)	144.0
Roadways Infrastructure & Public Facilities	81.9
Open Space/Conservation Areas/Parks	9.2
TOTAL	259.7

Table 2 Lot Types

LOT TYPE	UNITS
40-ft SFR Lots	771
50-ft SFR Lots	474
TOTAL	1245

Implementation of any proposed facilities or improvements outlined in this report requires written approval from the District's Board of Supervisors. Estimated costs outlined in this report are based on the best available information, which includes, but is not limited, to previous experience with similar projects. Actual costs could be different than estimates because final engineering and specific field conditions may affect construction costs.

All roadway improvements including sidewalks in the right-of-way and storm drainage collection systems (from the curb inlets to their connection to the stormwater ponds) within the development will be maintained by the District. Water distribution and wastewater collection systems (gravity lines, force mains, and lift stations) will be dedicated to the Town for ownership and maintenance upon completion.

PURPOSE AND SCOPE

The purpose of this report is to provide engineering support for the funding of the proposed improvements within the District. This report will identify the proposed public infrastructure to be constructed or acquired by the District along with an Opinion of Probable Construction Costs. The District will finance, construct, acquire, operate, and maintain all or specific portions of the proposed public infrastructure.

The predominant portion of this report provides descriptions of the proposed public infrastructure improvements, determination of estimated probable construction costs, and the corresponding benefits associated with the implementation of the described improvements. Detailed site construction plans and specifications have not yet been completed and permitted for the improvements described herein. The engineer has considered and in specific instances has relied upon, the information and documentation prepared or supplied by others to prepare this Engineer's Report.

THE DEVELOPMENT

The development will consist of a total of 1275 residential units and associated infrastructure. The development is a planned residential community consisting 259.72 acres located along both side of Detour Road, with the northern boundary along Kokomo Road (CR 546 East) and the southern boundary along Hatchineha Road (CR 542). It is located entirely within the Town of Lake Hamilton, Florida in Polk County. The land uses and zoning for the development is Residential Medium Density. The development will be constructed in a single phase over an estimated four (4) year period.

CAPITAL IMPROVEMENTS

The CIP consists of public infrastructure in the development. The primary portions of the CIP will provide for stormwater pond construction, roadways built to an urban roadway typical section, water, and sewer infrastructure including a lift station, and off-site improvements (including turn lanes and extension of water and sewer mains to serve the development).

There will also be stormwater structures and conveyance culverts within the CIP, which will outfall into the various on-site stormwater ponds. These structures and pond areas comprise the overall stormwater facilities of the CIP. Installation of the water distribution and wastewater collection system will also occur at this time as well as the lift station serving the project. Below-ground installation of telecommunications and cable television will occur but will not be funded by the District. Installation of streetlights and the incremental cost of undergrounding of power within the public rights-of-way or easements will be funded by the District.

The recreational areas will have connectivity via sidewalks to the other portions of the District. The recreational areas will be accessed by the public roadways and sidewalks.

CAPITAL IMPROVEMENT PLAN COMPONENTS

The CIP for the District includes the following:

Stormwater Management Facilities

Stormwater Management facilities consisting of storm conveyance systems and retention/detention ponds are contained within the District boundaries. Stormwater will be discharged via roadway curb and gutter and storm inlets. Storm culverts convey the runoff into the proposed retention ponds for water quality treatment and attenuation. The proposed stormwater systems will utilize dry retention and/or wet retention for biological

pollutant assimilation to achieve water quality treatment. The design criteria for the District's stormwater treatment systems are regulated by the county and SWFWMD.

Federal Emergency Management Agency Flood Insurance Rate Map (FEMA FIRM) Panel No 12105C0390G dated 12/22/2016 demonstrates that the property is located within Flood Zone X. Based on this information and the site topography, it appears that 100-year compensation will be done in areas where we will impact existing depressions throughout the development and the 100-year flood volumes will be compensated as it is required the county and FEMA.

During the construction of stormwater management facilities, utilities, and roadway improvements the contractor will be required to adhere to a Stormwater Pollution Prevention Plan (SWPPP) as required by the Florida Department of Environmental Protection (FDEP) as delegated by the Environmental Protection Agency (EPA). The SWPPP will be prepared to depict the proposed recommended locations of required erosion control measures and staked turbidity barriers specifically along the downgradient side of any proposed construction activity. The site contractor will be required to provide the necessary reporting as required by the National Pollutant Discharge Elimination System (NPDES) General Permit with erosion control, its maintenance, and any rainfall events that occur during construction activity.

Public Roadways

The proposed public roadway sections include a 24-foot roadway consisting of asphalt and with Miami curbs or Type F curb and gutter on both sides along with a 50-foot right-of-way. The proposed roadway section will consist of stabilized subgrade, a lime rock, crushed concrete, or cement-treated base, and asphalt type roadway wearing surface. The proposed curb is to be 2-feet wide and placed along the edge of the proposed roadway section for purposes of protecting the integrity of the pavement and to provide stormwater runoff conveyance to the proposed stormwater inlets.

The proposed roadways will also require signing and pavement markings within the public rights-of-way, as well as street signs depicting street name identifications and addressing, which will be utilized by the residents and public. As stated above, the District's funding of roadway construction will occur for all public roadways.

Water and Wastewater Facilities

A potable drinking water distribution system inclusive of a water main, gate valves, fire hydrants, and appurtenances will be installed. The water service provider will be the Town of Lake Hamilton. The water system will be designed to provide equal distribution and redundancy. The system will be installed within the proposed public rights-of-way and will provide potable drinking water (domestic) and fire protection services to serve the entire District.

A domestic wastewater collection system inclusive of gravity sanitary sewer mains and sewer laterals will be installed. The gravity sanitary sewer mains will be a minimum of eight (8)-inch diameter PVC pipe systems. The gravity sanitary sewer lines will be placed inside of the proposed public rights-of-way, under the proposed paved roadways. Sewer laterals will branch off from these sewer lines to serve the development. Lift stations are anticipated for this CIP. Flow from the lift station shall be connected to a proposed force main that will pump to an existing force main that will connect to the Town's wastewater treatment facility.

The Town's public utilities will provide the reclaimed water to be used for all irrigation within the CDD. The reclaimed water will be funded by the District and installed onsite within the roadways to provide for irrigation within the public right-of-way or any areas needing irrigation. Any water, sewer, or reclaim water pipes or facilities placed on private property will not be publicly funded.

Off-Site Improvements

The District will provide funding for the anticipated turn lanes at the development entrances. The site construction activities associated with the CIP are anticipated to be completed in approximately four (4) years. Upon completion, the improvements required inspections will be completed and final certifications of completions will

be obtained from SWFWMD, FDEP (water distribution and wastewater collection systems), and the Town of Lake Hamilton.

Amenities and Parks

The District will provide funding for an amenity center that is open to the residents and the public to include the following: parking areas, restroom facilities, pool, all-purpose playfields, and walking trails to provide connectivity to the various amenity centers within the CDD. In addition, there will be passive parks throughout the development, which will include benches and walking trails.

Electric Utilities and Lighting

The electric distribution system thru the District is currently planned to be underground. The District presently intends to fund the incremental cost of undergrounding of the electric conduits, transformer/cabinet pads, and electric manholes required by Duke Energy, with Duke providing underground electrical service to the development. The CDD presently intends to fund the cost to purchase and install the street lighting along the internal roadways within the CDD. District will retain ownership of the electric distribution system and streetlights and electrical service will be provided by Duke Energy.

Entry Feature

Landscaping, irrigation, entry features, and walls where required as a buffer at the entrances and along the outside boundary of the development, will be provided by the District. Landscaping for the roadways will consist of sod, perennial flowers, shrubs, ground cover, and trees for the internal roadways within the CDD. Perimeter fencing will be provided at the site entrances and perimeters where required as a buffer. These items will be funded, owned, and maintained by the CDD.

Miscellaneous

The stormwater improvements, landscaping and irrigation, recreational improvements, street lighting, and certain permits and professional fees as described in this report are being financed by the District to benefit all the developable real property within the District. The construction and maintenance of the proposed public improvements will benefit the development for the intended use as a single-family/residential planned development.

Permitting

Construction permits for all phases are required and include plan approvals from the SWFWMD, FDEP, Town of Lake Hamilton, and Polk county. Following is a summary of required permits obtained or pending approval for the construction of the public infrastructure improvements for the District:

Table 3 Permits/Approvals

Permits/Approvals	Approval/Expected Date
Zoning Approval	Residential Planned Unit Development (RPUD)
Preliminary Plat	To be obtained
SWFWMD ERP	To be obtained
Construction Permits	To be obtained
Town of Lake Hamilton - Water/Sewer	To be obtained
FDEP Sanitary Sewer General Permit	To be obtained
FDEP Water Distribution General Permit	To be obtained
FDEP NOI	To be obtained

RECOMMENDATION

As previously explained within this report, the public infrastructure, as described, is necessary for the development and functional operation as required by the Town. The site planning, engineering design, and construction plans

for the infrastructure are in accordance with the applicable requirements of the Polk County and the SWFWMD. It should be noted that the infrastructure will provide its intended use and function so long as the construction and installation are in substantial conformance with the design construction plans and regulatory permits.

Items utilized in the Opinion of Probable Costs for this report are based upon the proposed plan infrastructure as shown on construction drawings incorporating specifications in the most current SWFWMD, FDEP, Polk County, and Town of Lake Hamilton utilities regulations.

REPORT MODIFICATION

During the development and implementation of the designed public infrastructure improvements, it may be necessary to make modifications and/or deviations to the plans. However, if such deviations and/or revisions do not change the overall primary objective of the plan for such improvements, then the cost differences would not materially affect the proposed construction cost estimates.

SUMMARY AND CONCLUSION

The improvements as outlined are necessary for the functional development of the entire project. The project is being designed in accordance with current government regulatory requirements. The project will serve its intended function provided the construction is in substantial compliance with the design. Items of construction for the project are based upon current development plans.

ENGINEER'S CERTIFICATION

It is our professional opinion that the public infrastructure costs for the CIP provided in this report are reasonable to complete the construction of the public infrastructure improvements. Furthermore, the public infrastructure improvements will benefit and add value to lands within the District and the value is at least the same as the costs for said improvements.

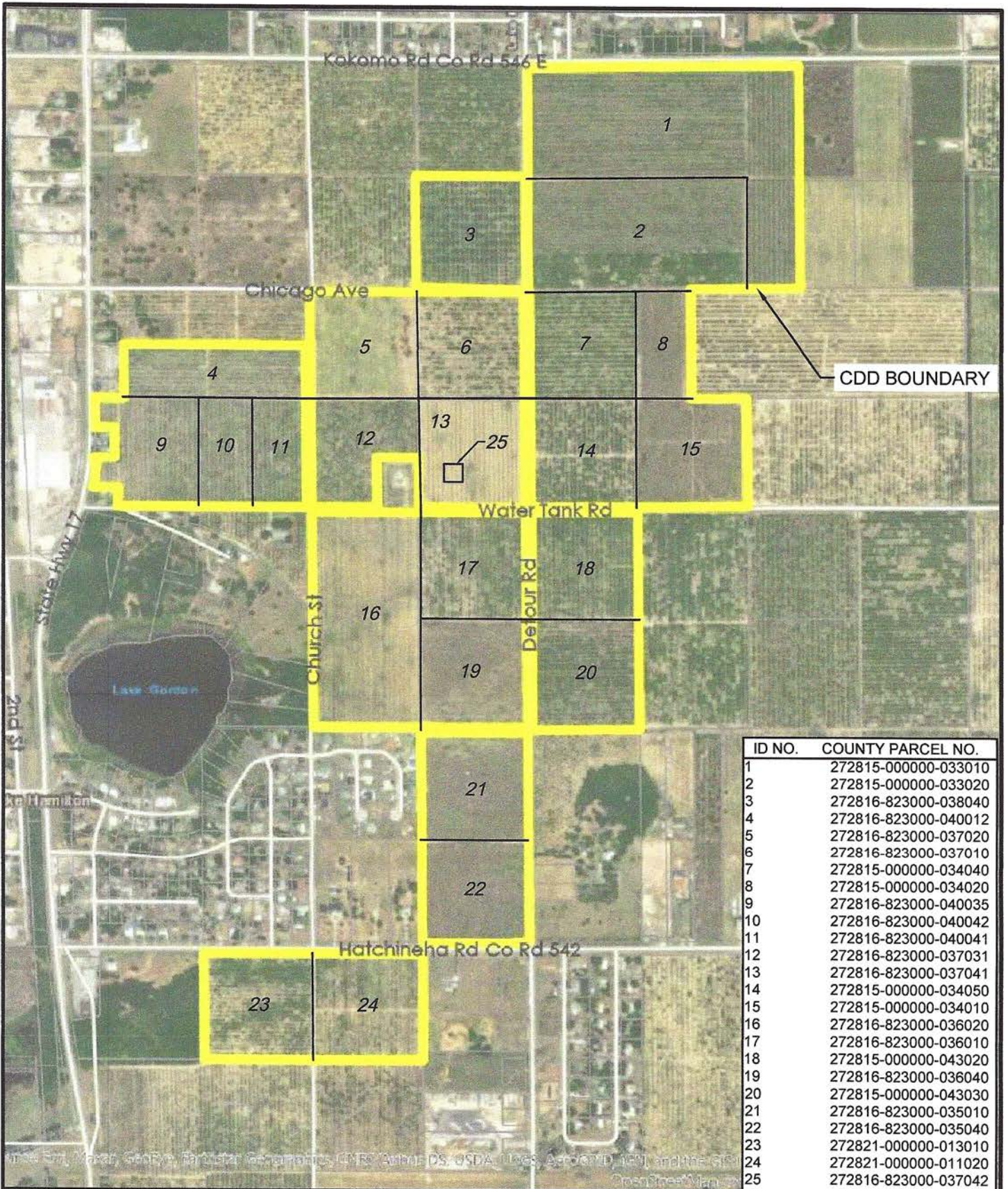
The Opinion of Probable Costs for the public infrastructure improvements is only an estimate and is not a guaranteed maximum price. The estimated costs are based upon current unit prices and on our experience with ongoing and similar projects and basis in the county and Town. However, labor market, future costs of equipment; materials, changes to the regulatory permitting agencies' activities, and the actual construction processes employed by the chosen site contractor are beyond the engineer's control. Due to this inherent opportunity for changes (upward or downward) in the construction costs, the total, final construction cost may be more or less than this estimate.

Based upon the presumption that the CIP construction continues in a timely manner, it is our opinion that the costs of the CIP proposed represent a system of improvements benefitting all developable property located within the District, are fair and reasonable, and that the District-funded improvements are assessable improvements within the meaning of Chapter 190, F.S. We have no reason to believe that the CIP improvements cannot be constructed at the cost described in this report. We expect the improvements to be constructed or acquired by the District with bond proceeds, as indicated within this report. We believe that the District will be well served by the improvements discussed in this report.

I hereby certify that the foregoing is a true and correct copy of the engineer's report for Hamilton Bluff Community Development District.



Reinardo Malavé, P.E.
Florida License No. 31588

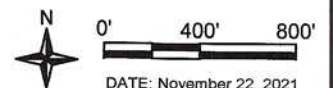


ID NO.	COUNTY PARCEL NO.
1	272815-000000-033010
2	272815-000000-033020
3	272816-823000-038040
4	272816-823000-040012
5	272816-823000-037020
6	272816-823000-037010
7	272815-000000-034040
8	272815-000000-034020
9	272816-823000-040035
10	272816-823000-040042
11	272816-823000-040041
12	272816-823000-037031
13	272816-823000-037041
14	272815-000000-034050
15	272815-000000-034010
16	272816-823000-036020
17	272816-823000-036010
18	272815-000000-043020
19	272816-823000-036040
20	272815-000000-043030
21	272816-823000-035010
22	272816-823000-035040
23	272821-000000-013010
24	272821-000000-011020
25	272816-823000-037042

SECTS 15-16, 21, T28S, R27E

APPROX. CDD BOUNDARY
AREA - 259.72 ± AC.

EXHIBIT 1 - LOCATION MAP HAMILTON BLUFF CDD



DATE: November 22, 2021

HAMILTON BLUFF COMMUNITY DEVELOPMENT DISTRICT
DESCRIPTION:

A parcel of land lying in Section 15, Township 28 South, Range 27 East, Polk County, Florida, and a part of MAP OF LAKE HAMILTON, according to the map or plat thereof, recorded in Plat Book 3, Page 34, of the Public Records of Polk County, Florida, lying in Section 16, Township 28 South, Range 27 East, Polk County, Florida, hereinafter referred to as "HAMILTON BLUFF CDD AREA 1", together with all rights of way; TOGETHER WITH a parcel of land lying in Section 21, Township 28 South, Range 27 East, Polk County, Florida, hereinafter referred to as "HAMILTON BLUFF CDD AREA 2", together with all rights of way, and being more particularly described as follows:

HAMILTON BLUFF CDD AREA 1:

COMMENCE at the Southeast corner of said Section 16; run thence along the South line of the Southeast 1/4 of said Section 16, N.89°58'56"W., a distance of 659.44 feet to the West line of the East 1/2 of the Southeast 1/4 of said Southeast 1/4, also being the West boundary of Lots 1 and 4, Block 35 and the Southerly extension thereof, of said MAP OF LAKE HAMILTON; thence along the West line of the East 1/2 of the Southeast 1/4 of said Southeast 1/4, N.00°35'28"W., a distance of 35.00 feet to the North Right of Way of Lake Hatchineha Road (County Road 542), and the POINT OF BEGINNING; thence continue along said West line, N.00°35'28"W., a distance of 1285.14 feet to the South line of the Northeast 1/4 of said Southeast 1/4, also being the centerline of a 30' platted Right of Way of said MAP OF LAKE HAMILTON; thence along the South line of the Northeast 1/4 of said Southeast 1/4, N.89°56'42"W., a distance of 659.68 feet to the West line of the Northeast 1/4 of said Southeast 1/4, also being the centerline of a 30' platted Right of Way of said MAP OF LAKE HAMILTON; thence along the West line of the Northeast 1/4 of said Southeast 1/4, N.00°34'15"W., a distance of 1320.57 feet to the South line of the Northeast 1/4 of said Section 16; thence along the South line of said Northeast 1/4, N.89°54'27"W., a distance of 1156.81 feet to the Southwesterly extension of the East boundary of Parcel 27-28-16-823000-040034, as described in Official Records Book 10524, Page 1578 of said Public Records; thence along said East boundary and Southwesterly extension thereof, N.02°57'51"E., a distance of 128.08 feet to the North boundary of said parcel; thence along said North boundary, S.89°45'25"W., a distance of 154.29 feet to the Easterly Right of Way of Scenic Highway (State Road 17), according to the State of Florida State Road Department Right-of-Way Map, Proj. 5209-Rd.(8), with a date drawn of 05/04/40; thence along said Easterly Right of Way the following three (3) courses: 1) Northerly, 145.19 feet along the arc of a non-tangent curve to the left having a radius of 1687.02 feet and a central angle of 04°55'52" (chord bearing N.08°24'27"E., 145.14 feet); 2) Along a radial line, N.84°03'29"W., a distance of 17.00 feet; 3) Northerly, 31.67 feet along the arc of a non-tangent curve to the left having a radius of 1670.02 feet and a central angle of 01°05'12" (chord bearing N.05°23'55"E., 31.67 feet) to the South boundary of Parcel 27-28-16-823000-040034, as described in Official Records Book 6529, Page 1275 of said Public Records; thence along said South boundary, N.89°24'39"E., a distance of 124.57 feet to the East boundary of said described parcel; thence along said East boundary, and the East boundaries of Parcel 27-28-16-823000-040033 and Parcel 27-28-16-823000-040032, as described in Official Records Book 7560, Page 2085 and Official Records Book 8476, Page 2278, respectively, of said Public Records, N.00°35'21"W., a distance of 180.00 feet to the North boundary of said Parcel 27-28-16-823000-040032; thence along said North boundary S.89°24'39"W., a distance of 117.00 feet to said Easterly Right of Way of Scenic Highway (State Road 17); thence along said Easterly Right of Way N.00°35'21"W., a distance of 175.00 feet to the South boundary of Lot 2, Block 40, of said MAP OF LAKE HAMILTON; thence along said South boundary of Lot 2, S.89°54'28"E., a distance of 175.01 feet to the East line of the West 175 feet of said Lot 2; thence along said East line, N.00°35'21"W., a distance of 322.50 feet to the North line of the South 1/2 of Lot 1 and said Lot 2, Block 40, of said MAP OF LAKE HAMILTON; thence along the North line of said South 1/2, S.89°54'28"E., a distance of 1111.77 feet to the West line of the Southeast 1/4 of said Northeast 1/4, also being the centerline of a 30' platted Right of Way of said MAP OF LAKE HAMILTON; thence along the West line of the Southeast 1/4 of said Northeast 1/4, N.00°34'18"W., a distance of 338.48 feet to the South line of the Northeast 1/4 of said Northeast 1/4, also being the centerline of a 30' platted Right of Way of said MAP OF LAKE HAMILTON; thence along the South line of the Northeast 1/4 of said Northeast 1/4, S.89°54'28"E., a distance of 659.95 feet to the Southerly extension of the West boundary of Lot 4, Block 38, of said MAP OF LAKE HAMILTON; thence along the West boundary of said Lot 4, Block 38, and the Southerly extension thereof, N.00°33'47"W., a distance of 683.67 feet to the North boundary of said Lot 4, Block 38; thence along said North boundary of Lot 4 and the Easterly extension thereof, S.89°47'41"E., a distance of 660.07 feet to the East line of said Northeast 1/4; thence along the East line of said Northeast 1/4, N.00°31'47"W., a distance of 642.60 feet to the Westerly extension of the South Right of Way of Kokomo Road (County Road 546E); thence along said South Right of Way, and Westerly extension thereof, N.89°12'47"E., a distance of 1655.21 feet to the East line of the West 1/4 of the North 1/4 of the Northwest 1/4 of aforesaid Section 15; thence along the East line of the West 1/4 of the North 1/4 of said Northwest 1/4, S.00°33'41"E., a distance of 1331.39 feet to the South line of the Northeast 1/4 of said Northwest 1/4; thence along the South line of the Northeast 1/4 of said Northwest 1/4, and the South line of the Northwest 1/4 of said Northwest 1/4, S.89°24'02"W., a distance of 661.46 feet to the East line of the West 1/2 of the Northeast 1/4 of the Southwest 1/4 of said Northwest 1/4; thence along the East line of the West 1/2 of the Northeast 1/4 of the Southwest 1/4 of said Northwest 1/4, S.00°33'31"E., a distance of 660.00 feet to the North line of the Southeast 1/4 of the Southwest 1/4 of said Northwest 1/4; thence along the North line of the Southeast 1/4 of the Southwest 1/4 of said Northwest 1/4, N.89°24'03"E., a distance of 330.75 feet to the East line of the Southeast 1/4 of the Southwest 1/4 of said Northwest 1/4; thence along the East line of the Southeast 1/4 of the Southwest 1/4 of said Northwest 1/4, S.00°33'36"E., a distance of 658.88 feet to the North line of the Southwest 1/4 of said Section 15; thence along the North line of said Southwest 1/4, S.89°23'44"W., a distance of 663.15 feet to the East line of the West 1/2 of the Northwest 1/4 of said Southwest 1/4; thence along the East line of the West 1/2 of the Northwest 1/4 of said Southwest 1/4, S.00°34'10"E., a distance of 1319.55 feet to the South line of the West 1/2 of the Northwest 1/4 of said Southwest 1/4; thence along the South line of the West 1/2 of the Northwest 1/4 of said Southwest 1/4, S.89°22'53"W., a distance of 661.81 feet to the West line of said Southwest 1/4; thence along the West line of said Southwest 1/4, S.00°34'24"E., a distance of 1269.71 feet to the Easterly extension of the North Right of Way of aforesaid Lake Hatchineha Road (County Road 542); thence along said North Right of Way and Easterly extension thereof, the following five (5) courses: 1) N.89°58'56"W., a distance of 40.00 feet; 2) S.00°34'24"E., a distance of 10.00 feet; 3) N.89°58'56"W., a distance of 60.00 feet; 4) S.00°34'24"E., a distance of 5.00 feet; 5) N.89°58'56"W., a distance of 559.44 feet to the POINT OF BEGINNING. Less and Except Parcel 27-28-16-823000-037032, as described in Official Records Book 4716, Page 1659 of said Public Records, being more particularly described as follows:

The South 300 feet of the East 250 feet of Lot 3, Block 37, MAP OF LAKE HAMILTON, as recorded in Plat Book 3, Page 34 of the public Records of Polk County, Florida.
Containing 240.531 acres, more or less.

TOGETHER WITH
HAMILTON BLUFF CDD AREA 2

COMMENCE at the Northeast corner of aforesaid Section 21; run thence along the North line of the Northeast 1/4 of said Section 21, N.89°58'56"W., a distance of 659.44 feet to the East line of the Northwest 1/4 of the Northeast 1/4 of said Northeast 1/4; thence along the East line of the Northwest 1/4 of the Northeast 1/4 of said Northeast 1/4, S.00°24'57"E., a distance of 35.00 feet to the South Right of Way of said Lake Hatchineha Road (County Road 542), and the POINT OF BEGINNING; thence continue along the East line of the Northwest 1/4 of the Northeast 1/4 of said Northeast 1/4, S.00°24'57"E., a distance of 632.34 feet to the South line of the Northwest 1/4 of the Northeast 1/4 of said Northeast 1/4; thence along the South line of the Northwest 1/4 of the Northeast 1/4 of said Northeast 1/4, and the South line of the Northeast 1/4 of the Northwest 1/4 of said Northeast 1/4, S.89°55'31"W., a distance of 1319.14 feet to the West line of the Northeast 1/4 of the Northwest 1/4 of said Northeast 1/4; thence along the West line of the Northeast 1/4 of the Northwest 1/4 of said Northeast 1/4, N.00°29'00"W., a distance of 634.48 feet to said South Right of Way of Lake Hatchineha Road (County Road 542); thence along said South Right of Way, S.89°58'56"E., a distance of 1319.90 feet to the POINT OF BEGINNING.
Containing 19.187 acres, more or less.

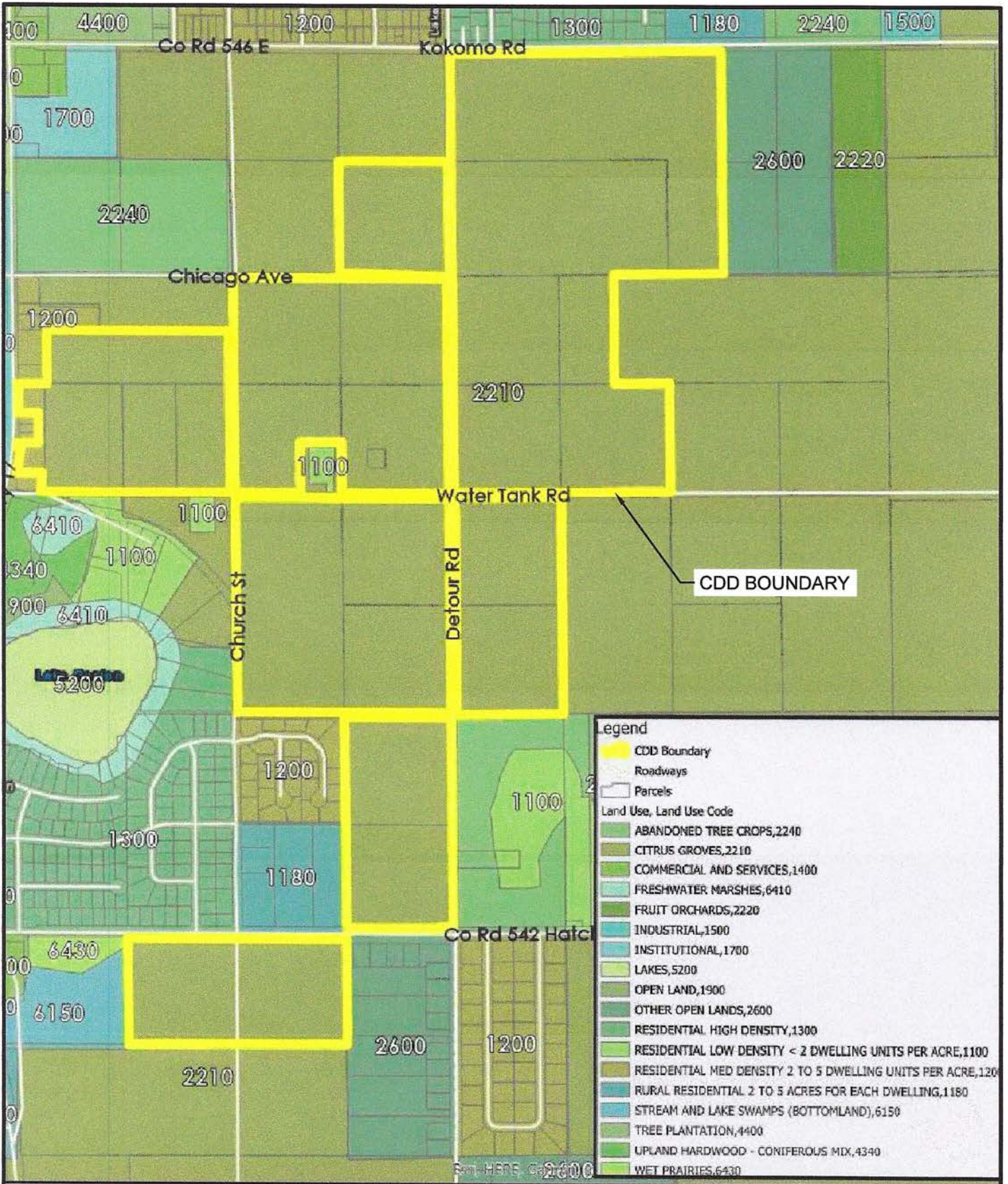
SECTS 15-16, 21, T28S, R27E

APPROX. CDD BOUNDARY
AREA - 259.72 ± AC.

EXHIBIT 2 - LEGAL DESCRIPTION HAMILTON BLUFF CDD



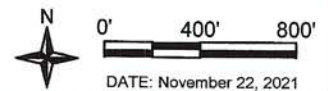
DATE: November 22, 2021



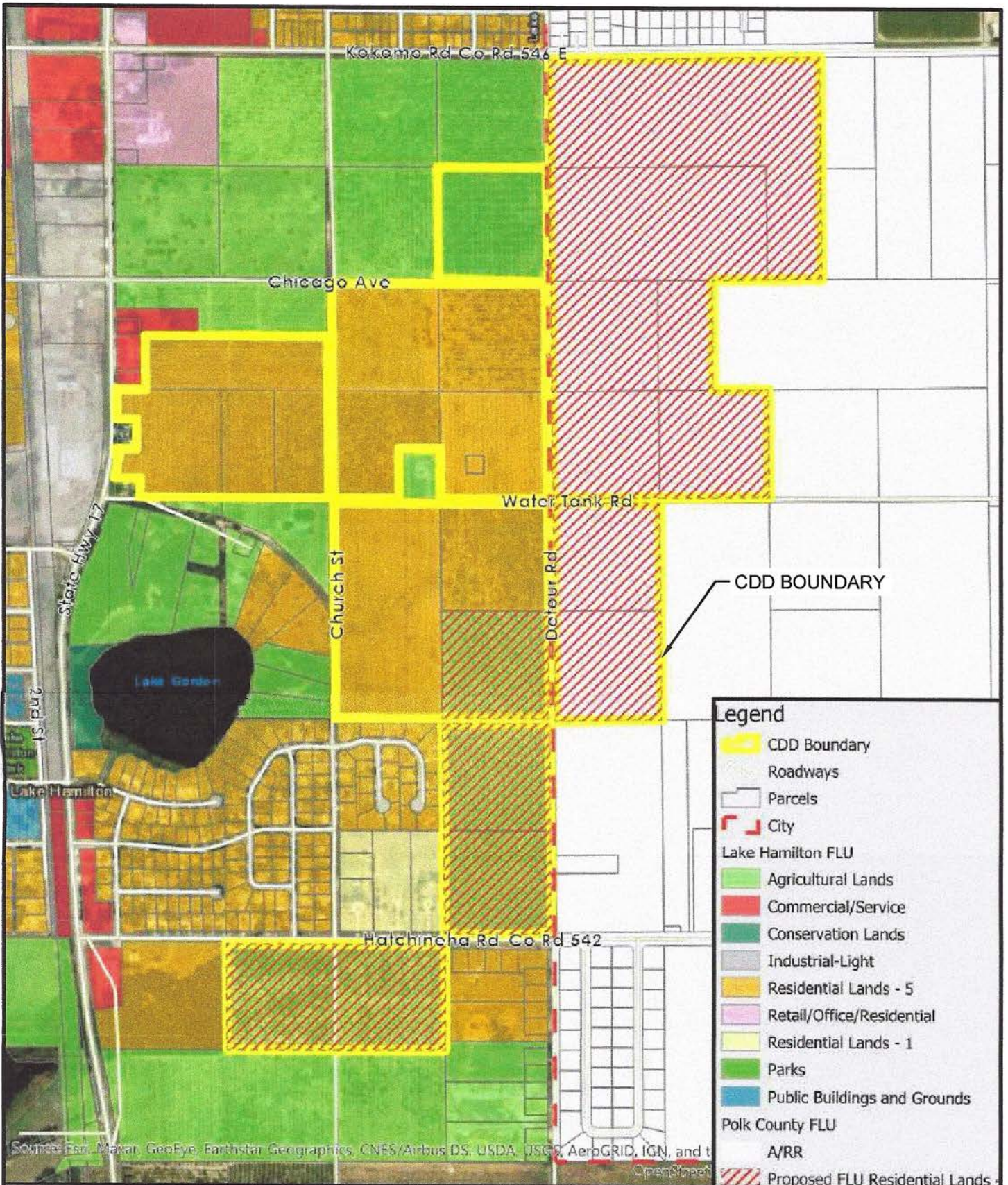
SECTS 15-16, 21, T28S, R27E

APPROX. CDD BOUNDARY
AREA - 259.72 ± AC.

EXHIBIT 4 - EXISTING LAND USE MAP HAMILTON BLUFF CDD



DATE: November 22, 2021



Legend

- CDD Boundary
- Roadways
- Parcels
- City
- Lake Hamilton FLU**
- Agricultural Lands
- Commercial/Service
- Conservation Lands
- Industrial-Light
- Residential Lands - 5
- Retail/Office/Residential
- Residential Lands - 1
- Parks
- Public Buildings and Grounds
- Polk County FLU**
- A/RR
- Proposed FLU Residential Lands

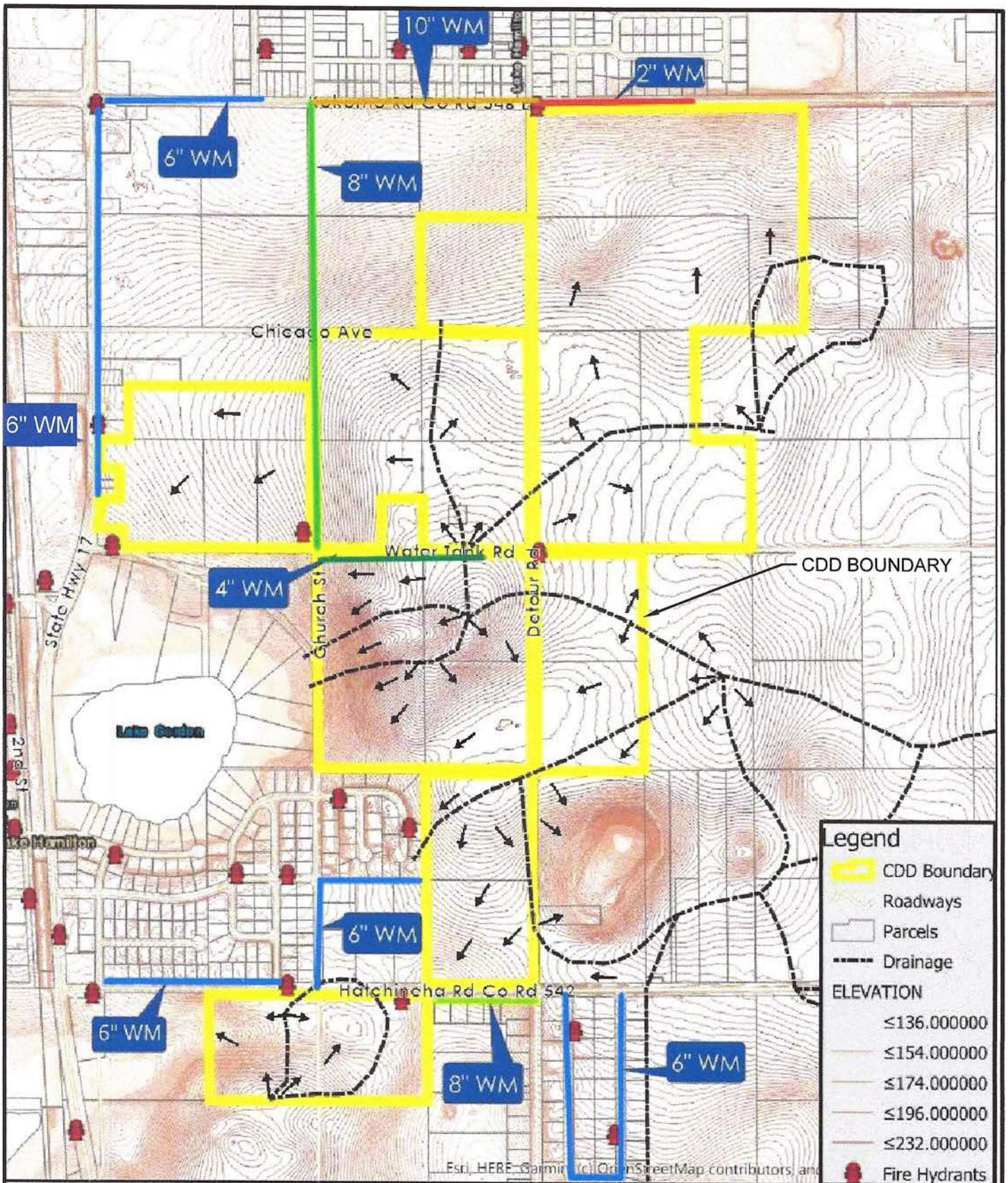
SECTS 15-16, 21, T28S, R27E APPROX. CDD BOUNDARY AREA - 259.72 ± AC.

EXHIBIT 5 - FUTURE LAND USE MAP HAMILTON BLUFF CDD



DATE: November 22, 2021

Sources: Esri, Maxar, GeoEye, Earthstar Geographics, CNES/Airbus DS, USDA, USGS, AeroGRID, IGN, and the

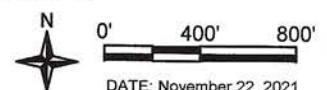


SECTS 15-16, 21, T28S, R27E

APPROX. CDD BOUNDARY
AREA - 259.72 ± AC.

EXHIBIT 6 - DRAINAGE AND UTILITIES

HAMILTON BLUFF CDD



DATE: November 22, 2021

**Composite Exhibit 7
Summary of Proposed District Facilities and Summary of Probable Cost**

<u>District Infrastructure</u>	<u>Construction</u>	<u>Ownership</u>	<u>Capital Financing*</u>	<u>Operation and Maintenance</u>
Entry Feature & Signage	District	District	District Bonds	District
Stormwater Facilities	District	District	District Bonds	District
Lift Stations/Water/Sewer	District	Lake Hamilton	District Bonds	Lake Hamilton
Street Lighting/Conduit	District	Duke/District**	District Bonds	Duke/District***
Road Construction	District	District	District Bonds	District
Parks & Amenities	District	District	District Bonds	District
Offsite Improvements	District	Polk County/Lake Hamilton	District Bonds	Polk County/Lake Hamilton

*Costs not funded by bonds will be funded by the developer.

** District will fund the incremental cost of undergrounding of electrical conduit.

***District will fund street lighting maintenanceservices from funds other than bond proceeds.

<u>Infrastructure</u>	<u>1245 Lots 2021-2024</u>
Offsite Improvements ⁽¹⁾⁽⁵⁾⁽⁷⁾⁽¹¹⁾	\$5,244,166
Stormwater Management ⁽¹⁾⁽²⁾⁽³⁾⁽⁵⁾⁽⁶⁾⁽⁷⁾	\$8,825,016
Utilities (Water, Sewer, & Street Lighting) ⁽¹⁾⁽⁵⁾⁽⁷⁾⁽⁹⁾⁽¹¹⁾	\$8,049,139
Roadway ⁽¹⁾⁽⁴⁾⁽⁵⁾⁽⁷⁾	\$4,006,649
Entry Feature ⁽¹⁾⁽⁷⁾⁽⁸⁾⁽⁹⁾⁽¹¹⁾	\$498,440
Parks and Amenities ⁽¹⁾⁽⁷⁾⁽¹¹⁾	\$2,093,460
Contingency ⁽¹¹⁾	\$3,156,276
TOTAL	\$31,873,146

Notes:

- District to be constructed as one (1) phase.
- Infrastructure consists of public roadway improvements, Stormwater management facilities, master sanitary sewer lift station and utilities, entry feature, landscaping and signage, and public neighborhood parks, all of which will be located on land owned by or subject to a permanent easement in favor of the District or another governmental entity.
- Excludes grading of each lot in conjunction with home construction, which will be provided by home builder.
- Includes Stormwater pond excavation. Does not include the cost of transportation of fill for use of private lots.
- Includes sub-grade, base, asphalt paving, curbing, and civil/site engineering.
- Includes subdivision infrastructure and civil/site engineering.
- Stormwater does not include grading associated with building pads.
- Estimates are based on 2021 cost.
- Includes entry features, signage, hardscape, landscape, irrigation and fencing.
- CDD will enter into a Lighting Agreement with Duke Energy for the street light poles and lighting service. Includes only the incremental cost of undergrounding.
- Estimates based on 1,245 lots.
- The costs associated with the infrastructure are a master cost and is effectively shared by the entire project (All phases).

Exhibit C

**Section 189, Florida
Statutes**

The 2025 Florida Statutes

Title XIII
PLANNING AND
DEVELOPMENT

Chapter 189
UNIFORM SPECIAL DISTRICT ACCOUNTABILITY
ACT

View Entire
Chapter

189.08 Special district public facilities report.—

(1) It is declared to be the policy of this state to foster coordination between special districts and local general-purpose governments as those local general-purpose governments develop comprehensive plans under the Community Planning Act, pursuant to part II of chapter 163.

(2) Each independent special district shall submit to each local general-purpose government in which it is located a public facilities report and an annual notice of any changes. The public facilities report shall specify the following information:

(a) A description of existing public facilities owned or operated by the special district, and each public facility that is operated by another entity, except a local general-purpose government, through a lease or other agreement with the special district. This description shall include the current capacity of the facility, the current demands placed upon it, and its location. This information shall be required in the initial report and updated every 7 years at least 12 months before the submission date of the evaluation and appraisal notification letter of the appropriate local government required by s. 163.3191. The department shall post a schedule on its website, based on the evaluation and appraisal notification schedule prepared pursuant to s. 163.3191(6), for use by a special district to determine when its public facilities report and updates to that report are due to the local general-purpose governments in which the special district is located.

(b) A description of each public facility the district is building, improving, or expanding, or is currently proposing to build, improve, or expand within at least the next 7 years, including any facilities that the district is assisting another entity, except a local general-purpose government, to build, improve, or expand through a lease or other agreement with the district. For each public facility identified, the report shall describe how the district currently proposes to finance the facility.

(c) If the special district currently proposes to replace any facilities identified in paragraph (a) or paragraph (b) within the next 10 years, the date when such facility will be replaced.

(d) The anticipated time the construction, improvement, or expansion of each facility will be completed.

(e) The anticipated capacity of and demands on each public facility when completed. In the case of an improvement or expansion of a public facility, both the existing and anticipated capacity must be listed.

(3) A special district proposing to build, improve, or expand a public facility which requires a certificate of need pursuant to chapter 408 shall elect to notify the appropriate local general-purpose government of its plans either in its 7-year plan or at the time the letter of intent is filed with the Agency for Health Care Administration pursuant to s. 408.039.

(4) Those special districts building, improving, or expanding public facilities addressed by a development order issued to the developer pursuant to s. 380.06 may use the most recent local government report required by s. 380.06(6) and submitted by the developer, to the extent the annual report provides the information required by subsection (2).

(5) The facilities report shall be prepared and submitted within 1 year after the district's creation.

(6) For purposes of the preparation or revision of local government comprehensive plans required pursuant to s. 163.3161, a special district public facilities report may be used and relied upon by the local general-purpose government or governments within which the special district is located.

(7) Any special district that has completed the construction of its public facilities, improvements to its facilities, or its development is not required to submit a public facilities report, but must submit the information required by paragraph (2)(a).

(8) A special district plan of reclamation required pursuant to general law or special act, including, but not limited to, a plan prepared pursuant to chapter 298 which complies with the requirements of subsection (2), shall satisfy the requirement for a public facilities report. A water management and control plan adopted pursuant to s. 190.013, which complies with the requirements of subsection (2), satisfies the requirement for a public facilities report for the facilities the plan addresses.

(9) The Reedy Creek Improvement District is not required to provide the public facilities report as specified in subsection (2).

(10) Each deepwater port listed in s. 403.021(9)(b) shall satisfy the requirements of subsection (2) by submitting to the appropriate local government a comprehensive master plan as required by s. 163.3178(2)(k). All other ports shall submit a public facilities report as required in subsection (2).

History.—s. 20, ch. 89-169; s. 26, ch. 95-280; s. 16, ch. 97-255; s. 17, ch. 99-8; s. 38, ch. 2011-139; s. 15, ch. 2012-99; s. 35, ch. 2014-22; s. 9, ch. 2018-158; s. 6, ch. 2023-31.

Note.—Former s. 189.415.